

*Curated*  
**SALES EVENT**



*M.S. Rau*  
FINE ART • ANTIQUES • JEWELS





**Louis XV Royal Presentation Sword**

Circa 1730

This exceptionally rare silver gilt sword was presented by the French King Louis XV to Alain Porée, Captain of the Corsairs, for his triumphs at sea in the name of the French monarchy. Designed by the great Juste-Aurèle Meissonnier and crafted by Thomas Germain, this is one of only four Royal swords presented by a French king to a corsair. The important sword is accompanied by documentation from the Musée de Saint-Malo and the ancestors of Alain Porée.

Sword: 37" length | Case: 40 1/2" w x 6 1/2" d x 4 1/2" h

#30-4838    ~~\$295,000~~    **\$221,250**





# *Curated*

---

## SALES EVENT

We are excited to announce a once-in-a-lifetime sales event on over 900 items, from important furniture and decorative objects to museum-quality fine art and one-of-a-kind jewels. This catalog is just a taste of the objects we are offering on sale. Visit [msrau.com/sale](https://msrau.com/sale) to view all of the items currently available with discounts from 20%-45% off. If you find something you want to add to your collection, contact your personal Sales Consultant soon. We only have one of every item, and this sale ends July 17.

### BUY WITH CONFIDENCE

**EXPERT INSIGHTS.** Everything in our gallery has been thoroughly researched and expertly vetted for quality and authenticity.

**125% GUARANTEE.** Each piece we sell is backed by the strongest guarantee in the business. Any item can be returned for full store credit, including 5% interest annually after 12 months for up to five years. Ask your Sales Consultant for full details.

No returns. All sales are final.

---

[MSRAU.COM/SALE](https://msrau.com/sale)



888-983-7485 • [MSRAU.COM](https://msrau.com) • 1



**Colombian Emerald Ring**

Emerald: 13.63 carats  
Diamonds: 2.49 carats | 18K gold

Colombian emeralds are coveted for their incomparable color, and this example displays the perfect "Old Mine" green hue that makes these gems so desired.

#30-3715     ~~\$228,500~~ **\$159,950**



**Cartier Pearl Ring**

Pearl: 9mm  
Diamonds: 1.00 carat | 18K white gold

This classic designer ring from Cartier is crafted in a bombé-style design inset by a single white pearl.

#30-7413     ~~\$18,500~~ **\$12,950**



**Untreated Colombian Emerald and Diamond Bracelet**

Emeralds: 3.77 carats  
Diamonds: 20.00 carats | Platinum

The five rare Colombian emeralds in this Art Deco-era bracelet are AGL-certified as untreated and Colombian.

7" length

#30-5055     ~~\$228,500~~ **\$137,100**





**White South Sea Pearl Necklace**

Pearls: 17mm – 20.3mm

Diamonds: 2.75 carats | 18K white gold

Twenty-three remarkably rare and monumental white South Sea pearls display their unique luster in this impressive strand.

17" length

#30-5728     ~~\$228,500~~ **\$159,950**





**Untreated Ruby and Diamond Ring**

Ruby: 3.02 carats | Diamonds: 1.87 carats  
Platinum and 18K gold

The extraordinary crimson oval-shaped ruby in this ring is certified by C. Dunaigre as untreated.

#30-3310    ~~\$128,500~~    **\$89,950**



**Rubellite and Ruby Earrings**

Rubellite tourmalines: 11.15 carats | Rubies: 3.80 carats  
Diamonds: 2.63 carats | 18K white gold

Rubellites, one of the most desirable of all tourmalines, are perfectly displayed in these drop earrings.

2" length

#30-3717    ~~\$38,500~~    **\$23,100**



**Cartier Art Deco Jade Jabot Pin**

Jade | Enamel and onyx with diamond and ruby accents | Signed "Cartier"

This Art Deco-era jabot pin by the esteemed Cartier is a fashion icon.

3¾" length

#30-6050    ~~\$44,500~~    **\$26,700**

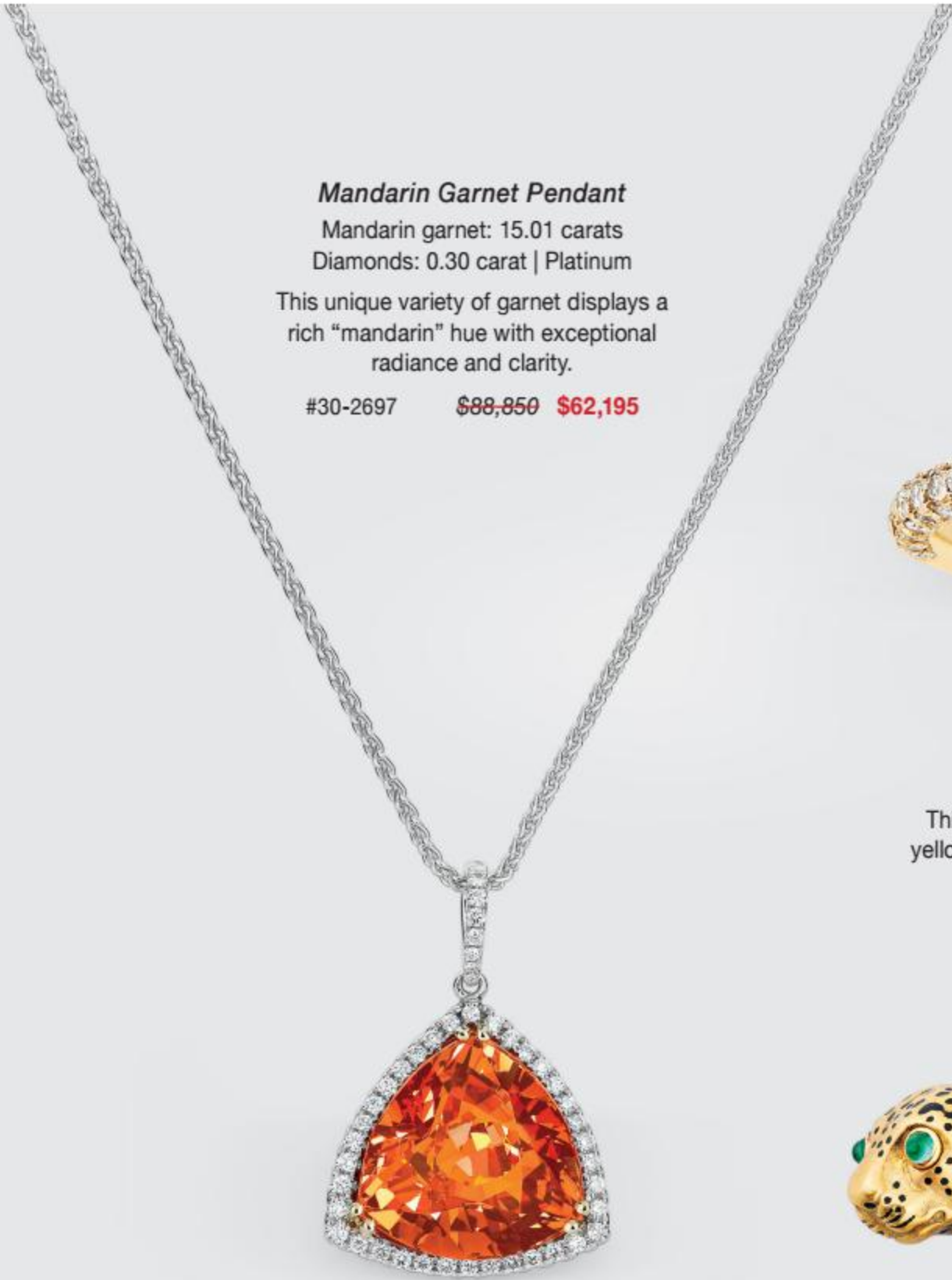


**Mandarin Garnet Pendant**

Mandarin garnet: 15.01 carats  
Diamonds: 0.30 carat | Platinum

This unique variety of garnet displays a rich "mandarin" hue with exceptional radiance and clarity.

#30-2697    ~~\$88,850~~ **\$62,195**



**Fancy Deep Yellowish-Orange  
Diamond Ring**

Orange diamond: 2.34 carats  
Diamond accents | 18K gold

This rare stone is GIA-certified as fancy deep yellowish-orange, one of the most desirable and radiant colors found in diamonds.

#30-3304    ~~\$138,500~~ **\$83,100**



**David Webb Leopard Brooch**

Enamel with cabochon emeralds and  
diamond accents | Platinum and  
18K gold | Signed "WEBB"

Part of Webb's *Kingdom* collection,  
this brooch is an iconic example of the  
jeweler's nature-inspired designs.

2 1/2" h x 3" w

#30-6491    ~~\$44,500~~ **\$31,150**





**Brazilian Paraiba Tourmaline Ring**

Paraiba tourmaline: 3.62 carats  
Diamonds: 0.64 carat | Platinum

This GIA-certified Brazilian Paraiba tourmaline displays the neon blue-green hue found only in the best stones.

#30-2365     ~~\$245,000~~ **\$171,500**

**Green Sapphire Dangle Earrings**

Sapphires: 16.06 carats | Platinum

Seventy-six rare green sapphires certified as untreated by C. Dunaigre are set in these glamorous earrings.

2" length

#30-6556     ~~\$42,500~~ **\$29,750**



**Black Opal and Diamond Ring**

Black opal: 8.28 carats  
Diamonds: 1.50 carats | Platinum

This black opal displays the stunning play of color that makes these gems so highly coveted.

#30-7912     ~~\$68,500~~ **\$47,950**



***Sugarloaf Tanzanite Ring***

Tanzanite: 22.10 carats  
Diamonds: 2.51 carats | Platinum  
This sugarloaf cabochon tanzanite displays the perfect violetish-blue hue.

#30-4291    ~~\$49,500~~ **\$34,650**



***Fancy Pink Diamond Ring***

Pink diamond: 2.58 carats  
White diamonds: 1.90 carats  
Platinum and 18K gold  
The rare pear-shaped diamond in this ring is GIA-certified as natural fancy purplish-pink.

#29-9840    ~~\$685,000~~ **\$445,000**

***Untreated Purple Sapphire Ring***

Purple sapphires: 3.36 carats  
Diamonds accents | Platinum  
The three purple sapphires in this ring are certified by C. Dunaigre as untreated.

#30-1832    ~~\$34,500~~ **\$20,700**







**JEAN-BAPTISTE-CAMILLE COROT**

1796-1875 | French

***The Ford with Five Cows***

Circa 1865 | Oil on canvas  
Signed "Corot" (lower left)

This landscape is a quintessential *plein air* masterpiece by the renowned French painter Jean-Baptiste-Camille Corot. Regarded by many as the first Impressionist, Corot's paintings served as the inspiration for an entire generation of artists, including Claude Monet. This example offers a tranquil scene rendered in his mature style, composed at the apogee of his career.

Canvas: 9<sup>3</sup>/<sub>4</sub>"h x 15<sup>1</sup>/<sub>2</sub>"w | Frame: 14"h x 19<sup>1</sup>/<sub>2</sub>"w

#30-6343    ~~\$228,500~~ **\$159,950**



**WILLIAM ADOLPHE  
BOUGUEREAU**

1825-1905 | French

*The Shepherdess*

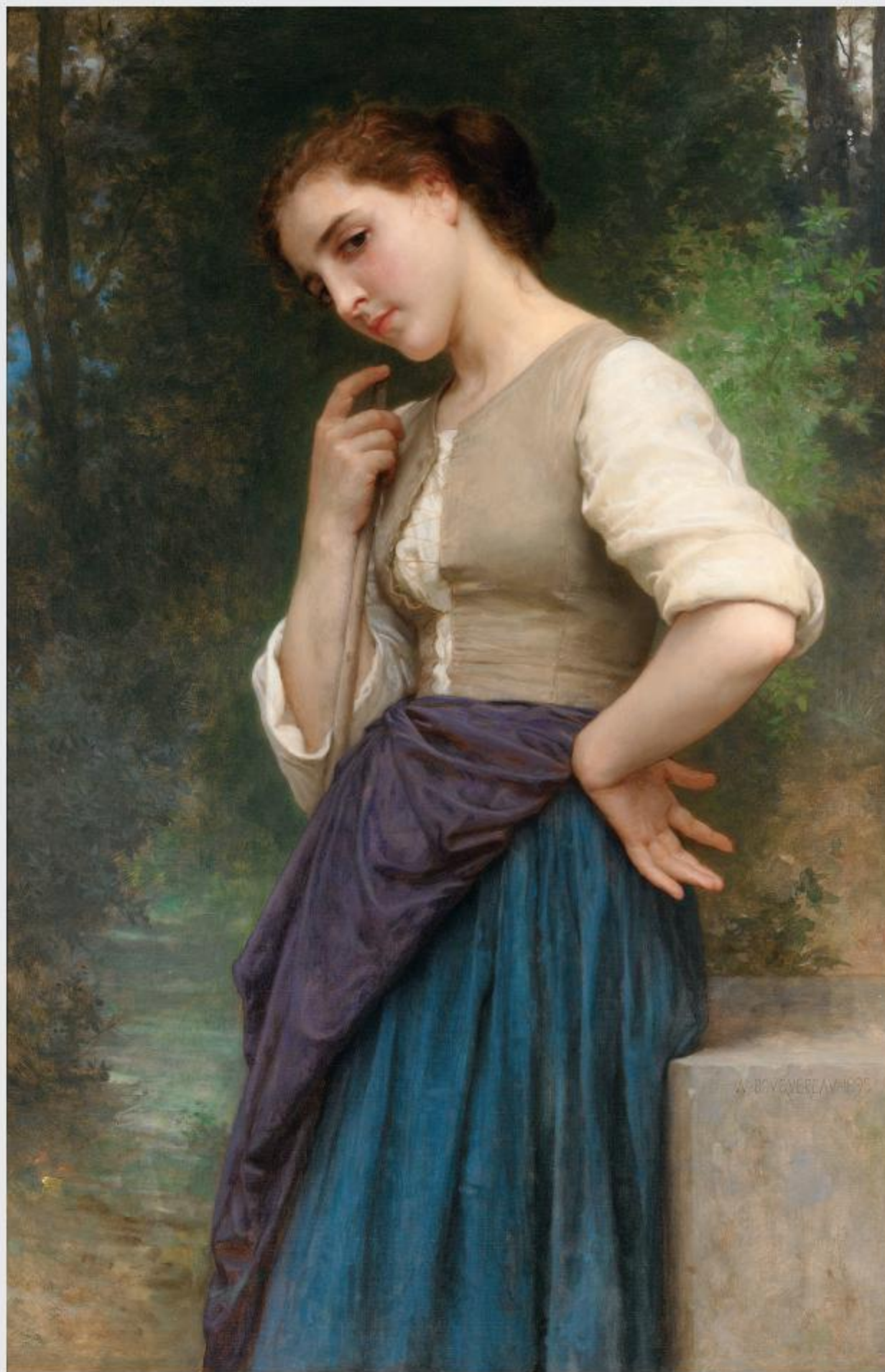
Dated 1895 | Oil on canvas

Signed "W-Bouguereau-1895" (lower right)

No other artist embodies the ideals of French Academic painting as perfectly as William Adolphe Bouguereau. This portrait of a young shepherdess glancing at the viewer with a coy smile demonstrates the artist's genius for human anatomy and his ability to capture the nuances of personality and atmosphere.

Canvas: 42<sup>7</sup>/<sub>8</sub>"h x 28"w | Frame: 57<sup>1</sup>/<sub>8</sub>"h x 43<sup>1</sup>/<sub>4</sub>"w

#30-4287     ~~\$2,750,000~~     **\$2,200,000**







**GERALD FESTUS KELLY**

1879-1972 | British

*Antoñita going to the Bulls*

Circa 1920 | Oil on canvas  
Signed and titled (en verso)

British painter Sir Gerald Festus Kelly offers an intriguing mix of sensuality and innocence in this arresting portrait of a young Andalusian woman. The highly exhibited work is rendered in exceptional detail, from the translucent lace framing his subject's youthful visage to the delicate folds of her silk lilac dress.

Canvas: 40<sup>1</sup>/<sub>8</sub>"h x 30<sup>1</sup>/<sub>2</sub>"w | Frame: 51<sup>1</sup>/<sub>4</sub>"h x 41<sup>1</sup>/<sub>4</sub>"w

#30-5250     ~~\$88,500~~ **\$66,375**



**LÉOPOLD FRANÇOIS  
KOWALSKY**

1856-1931 | French

***Autumn on the Shore of the Lake***

Late 19th century | Oil on canvas  
Signed "L. Kowalsky" (lower right)

An expert draftsman, Léopold Kowalsky's painting of an autumn afternoon is expertly rendered with vibrant complementary colors and precise detail. His technique reveals the influence of the Post-Impressionists, particularly in the work's brilliant light and texture.

Canvas: 25 $\frac{1}{2}$ "h x 18 $\frac{1}{8}$ "w | Frame: 31 $\frac{1}{8}$ "h x 26 $\frac{7}{8}$ "w

#30-0243     ~~\$98,500~~ **\$68,950**







**THOMAS ROSSITER**

1818-1871 | American

***Napoléon's Tomb***

Dated 1854 | Oil on canvas

Signed "Rossiter / 1854" (lower left)

This work by Thomas Rossiter captures the tomb of Napoléon on the island of St. Helena, where he was exiled from 1815 until his death in 1821. The artist presents an idealized vision of Napoléon's resting place, executed with a distinctively American eye for the romantic. Hidden between the trees is a silhouette of the emperor himself, gazing out towards the sea as though longing to return to France.

Canvas: 25"h x 30<sup>1</sup>/<sub>4</sub>"w | Frame: 34<sup>1</sup>/<sub>2</sub>"h x 39<sup>1</sup>/<sub>2</sub>"w

#30-8565     ~~\$98,500~~ **\$73,875**



**JOSEPH FRANQUE**

1774-1833 | French

*His Majesty the Emperor: The Morning  
of the Battle of Moscow*

Circa 1812 | Oil on canvas

An imposing Emperor Napoléon addresses his army before the Battle of Borodino of 1812 in this monumental oil by Joseph Franque. The pivotal masterpiece was displayed in the final showing of Salon portraits of Napoléon during his lifetime, and it is one of the few of him as emperor in the field.

Canvas: 89<sup>3</sup>/<sub>4</sub>"h x 48<sup>3</sup>/<sub>8</sub>"w | Frame: 105"h x 63<sup>3</sup>/<sub>4</sub>"w

#30-4811     ~~\$885,000~~     **\$663,750**

---

THIS EXCLUSIVE SALE ENDS JULY 17 –  
DON'T MISS OUT ON THIS ONCE-IN-A-  
LIFETIME OPPORTUNITY.

---



888-983-7485 • MSRAU.COM • 13





**AUGUSTE-CLÉMENT CHRÉTIEN**

1835-1913 | French

*The Education of Achilles*

Dated 1861 | Oil on canvas

Signed "A.C. Chrétien 1861" (lower right)

A masterpiece of French Neoclassical painting, this monumental oil by Auguste-Clément Chrétien is among the most significant paintings in this celebrated painter's oeuvre. Composed for and exhibited at the Paris Salon of 1861, the composition depicts a famous episode in the life of the legend Achilles — his education by the centaur Chiron.

Canvas: 51<sup>3</sup>/<sub>16</sub>"h x 64<sup>3</sup>/<sub>8</sub>"w | Frame: 57"h x 70<sup>1</sup>/<sub>4</sub>"w

#30-7585     ~~\$248,500~~ **\$198,800**





**JEAN-LÉON GÉRÔME**

1824-1904 | French

***Leda and the Swan***

Circa 1896 | Oil on canvas

Signed "J.L. Gérôme" (lower right)

Academic master Jean-Léon Gérôme brings to life the ancient Greek myth of Leda and the swan in this highly detailed oil on canvas. Brilliantly conceived, the work brings together Gérôme's aptitude for narrative painting with his incomparable virtuosity in capturing the female nude.

Canvas: 32 $\frac{1}{2}$ "h x 29"w | Frame: 38"h x 34 $\frac{1}{2}$ "w

#30-0185    ~~\$295,000~~    **\$191,750**

888-983-7485 • MSRAU.COM • 15





**CHARLES-JOSEPH-FRÉDÉRIC  
SOULACROIX**  
1825-1879 | French

*Afternoon Tea for Three*

19th century | Oil on canvas  
Signed "F. Soulacroix/Florence" (lower right)

A trio sits down for afternoon tea in this oil by Charles-Joseph-Frédéric Soulacroix. The undisputed master of "Silk and Satins," Soulacroix composed extravagant works with an unparalleled level of intricacy. Every luxurious detail is rendered with photographic realism and remarkable detail.

Canvas: 34<sup>1</sup>/<sub>4</sub>"h x 26<sup>1</sup>/<sub>4</sub>"w | Frame: 48<sup>3</sup>/<sub>4</sub>"h x 40<sup>3</sup>/<sub>4</sub>"w

#30-7144    ~~\$148,500~~    **\$103,950**





**J. CORNEAU**

19th century | French

***High Society***

19th century | Oil on canvas

Signed "J. Corneau" (lower left)

High society at leisure is the subject of this delightful 19th-century oil on canvas. Genre scenes such as this that are centered on the ideals of bourgeois life were highly sought after in their age, combining fantasy with reality, sensuality with sensibility and, above all, luxury and sophistication.

Canvas: 29<sup>1</sup>/<sub>2</sub>"h x 39<sup>3</sup>/<sub>4</sub>"w | Frame: 43"h x 55"w

#30-4264    ~~\$34,500~~    **\$22,425**

888-983-7485 • MSRAU.COM • 17





**JEAN-ANDRÉ RIXENS**

1846-1924 | French

***Young Nude Styling her Hair***

Dated 1887 | Oil on canvas

Signed "Rixens 87" (lower left)

This composition by the Naturalist Jean-André Rixens is loosely based on Émile Zola's famed character Nana, a young red-headed courtesan first introduced in his 1876 *L'Assommoir* and later developed in his 1880 *Nana*. The intimate scene recalls the work of Rixens' contemporary, Edouard Manet, in both its subject and its expressive style.

Canvas: 40"h x 25<sup>3</sup>/<sub>4</sub>"w | Frame: 50<sup>1</sup>/<sub>4</sub>"h x 35<sup>1</sup>/<sub>2</sub>"w

#30-6512     ~~\$98,500~~ **\$73,875**





**DELPHIN ENJOLRAS**

1857-1945 | French

***Reclining Nude***

Dated 1918 | Pastel on paper

Signed "Paris 11 novembre 1918 11h. matin/DEnjolras" (lower center)

This pastel by the Academic painter Delphin Enjolras is among the French artist's celebrated series of female nudes. He specialized in paintings that paid homage to the female form, excelling in portraits depicting young women in airy, domestic scenes. The present work is imbued with the luminosity for which Enjolras is celebrated.

Paper: 23<sup>1</sup>/<sub>2</sub>"h x 31"w | Frame: 31<sup>3</sup>/<sub>8</sub>"h x 38<sup>13</sup>/<sub>16</sub>"w

#30-8547    ~~\$49,500~~    **\$37,125**

888-983-7485 • MSRAU.COM • 19





**JOHANN BERTHELSEN**

1883-1972 | American

***Winter in Washington Square, New York***

Circa 1940 | Oil on canvas

Signed "Johann Berthelsen" (lower right)

Johann Berthelsen's wintertime scene perfectly portrays the beauty and ambiance of snowfall in the city. Heavily influenced by the Impressionists of France, Berthelsen sacrifices the details of the cityscape in favor of atmosphere. The painting's blue- and grey-toned palette conveys the tranquility of a winter's afternoon.

Canvas: 16<sup>1</sup>/<sub>8</sub>"h x 20<sup>1</sup>/<sub>8</sub>"w | Frame: 23<sup>5</sup>/<sub>8</sub>"h x 27<sup>3</sup>/<sub>4</sub>"w

#30-8303    ~~\$38,850~~    **\$29,138**





**JACQUES MARTIN-FERRIÈRES**

1893-1972 | French

*Piscine Deligny on the River Seine*

Dated 1931 | Oil on canvas

Signed "Jac Martin-Ferrières 31" (lower left)

This snow-filled wintertime view of the river Seine in Paris was captured by the French painter Jacques Martin-Ferrières. The subject is the Piscine Deligny, the legendary floating barge that contained a swimming pool. It was perhaps the most glamorous public pool in history, frequented by kings and celebrities alike.

Canvas: 25<sup>3</sup>/<sub>4</sub>"h x 34<sup>1</sup>/<sub>4</sub>"w | Frame: 34<sup>3</sup>/<sub>4</sub>"h x 45<sup>5</sup>/<sub>8</sub>"w

#30-7813     ~~\$64,500~~ **\$48,375**

888-983-7485 • MSRAU.COM • 21





**JEAN FRANÇOIS RAFFAËLLI**

1850-1924 | French

***Les Champs-Élysées***

Circa 1890 | Oil on paper laid on canvas

Signed "JF Raffaëlli" (lower right)

This thoroughly modern view of Les Champs-Élysées was composed by the French painter Jean François Raffaëlli. The oil captures a common scene from late 19th-century life in Paris: a popular avenue on a cool autumn day traversed by groups of social elite, each dressed in the fashions of the age.

Canvas: 25"h x 36"w | Frame: 38<sup>3</sup>/<sub>8</sub>"h x 45<sup>7</sup>/<sub>8</sub>"w

#30-6519     ~~\$298,500~~     **\$223,875**





**GEORGE ELGAR HICKS**

1824-1914 | British

*The Drive*

Dated 1860 | Oil on panel

Signed "G E Hicks 1860" (lower right)

This portrait by George Elgar Hicks captures two elegant ladies as they take a carriage ride on a bright, winter morning. Hicks' most famous works were his detailed portrayals of Victorian life, which are reminiscent of the great Victorian novelists Charles Dickens and George Augustus Sala.

Panel: 9<sup>3</sup>/<sub>4</sub>"h x 7<sup>3</sup>/<sub>4</sub>"w | Frame: 19"h x 17"w

#29-4021     ~~\$39,500~~     **\$23,700**

888-983-7485 • MSRAU.COM • 23





**CAMILLE PISSARRO**  
1830-1903 | French

***Peasant Arranging her Scarf***

Circa 1882-83 | Pastel on paper  
Initial "C.P." (lower right)

This tranquil work by Camille Pissarro represents a period of significance for the Impressionist master. During the early 1880s, he experimented in a range of media, creating works dedicated to the human figure – particularly peasant women. In pastel, watercolor and print, Pissarro captured the intimate moments of rural life.

Paper: 24"h x 18<sup>1</sup>/<sub>2</sub>"w | Frame: 27<sup>1</sup>/<sub>4</sub>"h x 22"w

#30-4979    ~~\$285,000~~    **\$213,750**





**JOHN ATKINSON GRIMSHAW**

1836-1893 | British

*Autumn Garden Walk*

Dated 1879-80 | Oil on canvas

Signed "Atkinson Grimshaw 1879-80" (lower right)

This countryside oil showcases British painter John Atkinson Grimshaw's mastery of light and atmosphere. While most of the artist's works depict moon-washed cities and the fishing villages of Britain, the location of this piece is the British countryside, giving it a sense of romance that would have resonated with its Victorian audience.

Canvas: 20"h x 30"w | Frame: 33<sup>1</sup>/<sub>2</sub>"h x 43<sup>1</sup>/<sub>2</sub>"w

#30-6163     ~~\$445,000~~ **\$298,800**

888-983-7485 • MSRAU.COM • 25





**NORMAN ROCKWELL**

1894-1978 | American

***Poor Richard's Almanack (Ben Franklin's Belles)***

Composed in 1963 | Charcoal on paper

Signed and inscribed "Norman Rockwell" (lower right)

This drawing by Norman Rockwell was created for *Poor Richard: The Almanacks for the Years 1733-1758*, a 230th anniversary edition of the famed almanacs written by Benjamin Franklin. Rockwell created over three dozen vignettes for the book, most of which are now in the Norman Rockwell Museum (Massachusetts).

Paper: 28<sup>3</sup>/<sub>4</sub>"h x 23<sup>7</sup>/<sub>8</sub>"w | Frame: 32<sup>7</sup>/<sub>8</sub>"h x 27<sup>7</sup>/<sub>8</sub>"w

#30-7803     \$598,500     **\$418,950**





**NORMAN ROCKWELL**

1894-1978 | American

***Boypower Manpower***

Circa 1971 | Oil on artist's panel

Signed "Norman Rockwell" (lower right)

Displaying the artist's distinctive style, this oil is a well-executed study for Rockwell's 1971 Boy Scouts of America poster. It represents the culmination of over 60 years of illustrations that the legendary painter composed for the organization during his career. His idyllic vision of American life made him the ideal visual spokesman for the Boy Scouts.

Panel: 29<sup>1</sup>/<sub>2</sub>"h x 28<sup>1</sup>/<sub>2</sub>"w | Frame: 38"h x 36<sup>1</sup>/<sub>2</sub>"w

#30-7404    ~~\$985,000~~    **\$689,500**

888-983-7485 • MSRAU.COM • 27





**ÉMILE BRUCHON**

act.1880-1910 | French

*Goddess*

Circa 1890 | Bronze

Signed "Bruchon" and stamped with foundry mark

Émile Bruchon was a quintessential Belle Époque French decorative artist, and this neoclassical bronze sculpture of a Greco-Roman goddess in flowing robes is exemplary of his finely detailed style.

9 1/2" w x 7" d x 18 1/8" h

#29-5322     ~~\$12,850~~ **\$8,995**



**FRENCH SCHOOL**

19th century | French

*Venus and the Tortoise*

Circa 1880 | Bronze

Depicting the goddess Venus resting atop a tortoise, this neoclassical bronze was inspired by the important sculpture *Vénus Accroupie (Venus Crouched)* by Antoine Coysevox, which is in the collection of Puget Court at the Musée du Louvre.

12" w x 10" d x 18 7/8" h

#29-8708     ~~\$19,850~~ **\$13,895**



**GOLDSCHIEDER**

1885-1930s | Austrian

*Hylithrope*

Circa 1899 | Terracotta

Signed "A. Bertrand" and stamped Goldscheider

This exceptionally detailed bust was modeled by Art Nouveau sculptor A. Bertrand and crafted by the famed Goldscheider Manufactory of Vienna. Abundant foliage, including golden sunflowers, surrounds the maiden as she glances over with a warming smile.

14½" w x 10¼" d x 28½" h

#29-9166     ~~\$12,850~~ **\$7,710**



888-983-7485 • MSRAU.COM • 29





**JOSEPH GOTT**

1786-1860 | British

***Little Red Riding Hood***

19th century | White marble  
Signed "J. Gott, Ft."

Known for his unconventional, light-hearted approach to his subjects, Joseph Gott offers his own interpretation of the character of Little Red Riding Hood in this statue. One of Gott's finest and most charming works, the intricately carved figure is the picture of purity and naturalness.

19"w x 14"d x 46<sup>5</sup>/<sub>8</sub>"h

#29-2948    ~~\$78,850~~ **\$47,310**





**HERMANN HAASE-ILSENBURG**

1879-1960 | German

*The Abduction of Europa*

Circa 1910 | Bronze  
Signed "HHaase"

This bronze captures the mythical tale of Europa, the Phoenician princess who was kidnapped by the king of the gods, Zeus. Among the most well-known tales from mythology, the story of Europa is beautifully translated here in the early Art Deco style.

17"w x 8"d x 23½"h

#30-6243    ~~\$18,850~~ **\$15,080**



**AFFORTUNATO GORI**

act.1895-1925 | Italian

*Children Sledding*

Early 20th century | Bronze on marble

This Art Deco sculpture by Italian sculptor Affortunato Gori captures a trio of putti joyfully navigating their sled in the snow, which is rendered from a solid piece of white marble.

14½"w x 6½"d x 7⅞"h

#30-7609    ~~\$9,850~~ **\$5,910**

888-983-7485 • MSRAU.COM • 31





**Meissen Four Seasons Clock**

Late 19th century

This Meissen porcelain mantel clock showcases the company's mastery of allegorical themes with its depiction of the Four Seasons. Stamped with Meissen crossed swords.

16" w x 8" d x 22" h

#30-0419    ~~\$34,500~~    **\$24,150**



**Cartier Desk Clock**

Circa 1940

This classic desk clock by Cartier is crafted in a sleek, retro design featuring a crystal frame and golden accents. Comes complete with original case. Signed "Cartier."

3 1/2"w x 3/4"d x 3 1/2"h

#30-7134    ~~\$28,500~~ **\$21,375**

---

TO VIEW THE COMPLETE  
SELECTION OF THE 900+ ITEMS  
IN THIS EXCLUSIVE SALE, VISIT  
[MSRAU.COM/SALE](http://MSRAU.COM/SALE).

---



**Paul Frey Gold and Jade Clock**

Late 19th / Early 20th century

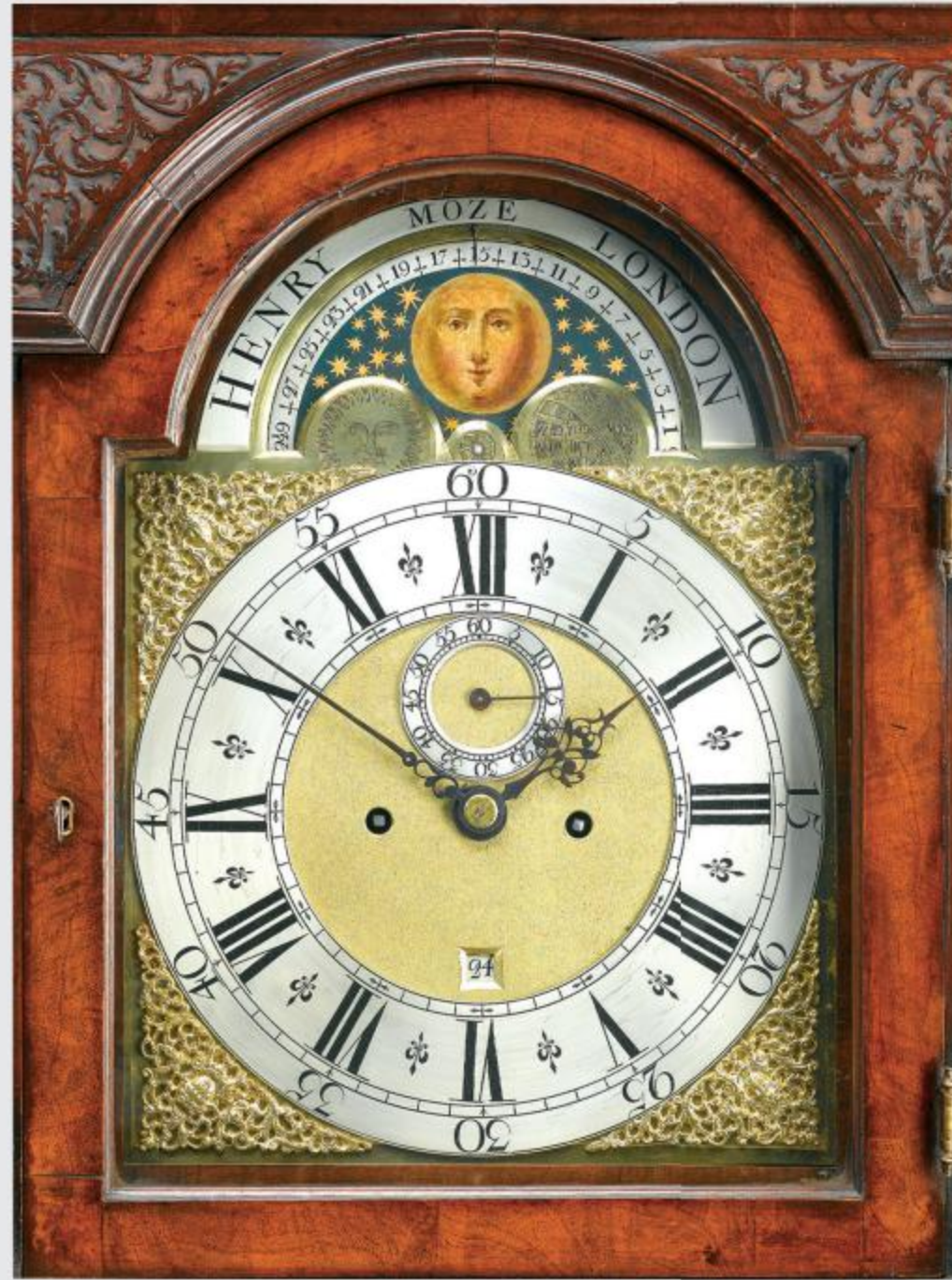
An exceptionally rare objet d'art, this French Art Nouveau miniature clock was crafted by Parisian jeweler Paul Frey from solid 18K gold and jade. Marked "PF" for Paul Frey.

2"w x 2"d x 5 3/8"h

#30-6081    ~~\$98,500~~ **\$64,025**







**Henry Moze Longcase Clock**

Circa 1740

This grand George II-period longcase clock by Henry Moze features an eight-day, two-train movement with a mechanism to display the moon phases and date. The clock is set to strike on the hour and maintains a wonderful sound.

21" w x 10 1/4" d x 96" h

#29-3095     ~~\$68,500~~ **\$47,950**



**J.E. Caldwell Desk Clock**

Circa 1920

This Art Deco-style desk clock by J.E. Caldwell features a gilded and enameled dial framed by onyx. Signed "J.E.Caldwell."

5<sup>1</sup>/<sub>8</sub>"w x 5<sup>5</sup>/<sub>8</sub>"h

#30-0489    ~~\$14,500~~    **\$9,950**



**Vacheron Constantin Chronometer**

Circa 1929

This rare precision chronometer, or deck watch, by Vacheron Constantin is one of the most accurate instruments ever made. It was used to determine longitude at sea through celestial navigation.

4<sup>1</sup>/<sub>2</sub>"w x 5<sup>3</sup>/<sub>4</sub>"d x 2<sup>3</sup>/<sub>4</sub>"h

#29-8853    ~~\$24,500~~    **\$17,150**

**Renaissance Table Clock**

Circa 1700

Crafted by Prague clockmaker Andreas Glenck, this late Renaissance-era table clock strikes on the hour and quarter hour. Its fire-gilt and silvered brass case features windows that allow the mechanism to be visible while operating.

3<sup>3</sup>/<sub>4</sub>"w x 2<sup>7</sup>/<sub>8</sub>"d x 3<sup>1</sup>/<sub>8</sub>"h

#30-1655    ~~\$39,500~~    **\$27,650**







***Chippendale-Style Breakfront***

Circa 1880

This Victorian library breakfront is crafted of Cuban mahogany in the Chippendale Revival style. Standing nine feet high, it displays all of the aesthetic hallmarks of Thomas Chippendale's iconic designs.

71<sup>3</sup>/<sub>4</sub>"w x 18<sup>1</sup>/<sub>2</sub>"d x 108"h

#30-1232     ~~\$58,500~~ **\$35,100**





**Regency Hall Chairs**

Circa 1830

Crafted of mahogany, these Regency-era hall chairs display the elegant lines and precise craftsmanship reminiscent of Thomas Sheraton's groundbreaking, yet functional designs.

16 1/2" w x 16 1/2" d x 36" h

#30-6399     ~~\$24,500~~ **\$19,600**



**Regency Card Tables**

Circa 1825

This pair of card tables was designed to serve as D-shaped side tables when not in use. The hinged tops allow the tables to easily transform into a playing surface.

36" w x 36" d x 28 1/2" h

#30-7448     ~~\$34,500~~ **\$27,600**





***Aubusson Parlor Suite***

Circa 1870

This five-piece carved walnut parlor suite in the Louis XV-style is richly upholstered in exceptional hand-woven Aubusson tapestries. Long recognized for their superb weaving, Aubusson tapestries are difficult to find in such pristine condition.

Sofa: 72"w x 25"d x 41½"h

#28-919    ~~\$28,500~~ **\$19,950**







**François Linke Cabinet**

Circa 1900

This important Louis XV-style mahogany library cabinet by François Linke features lattice-form marquetry, gilded bronze mounts and ample storage space. Signed "F. Linke."

78 1/2" w x 22" d x 72" h

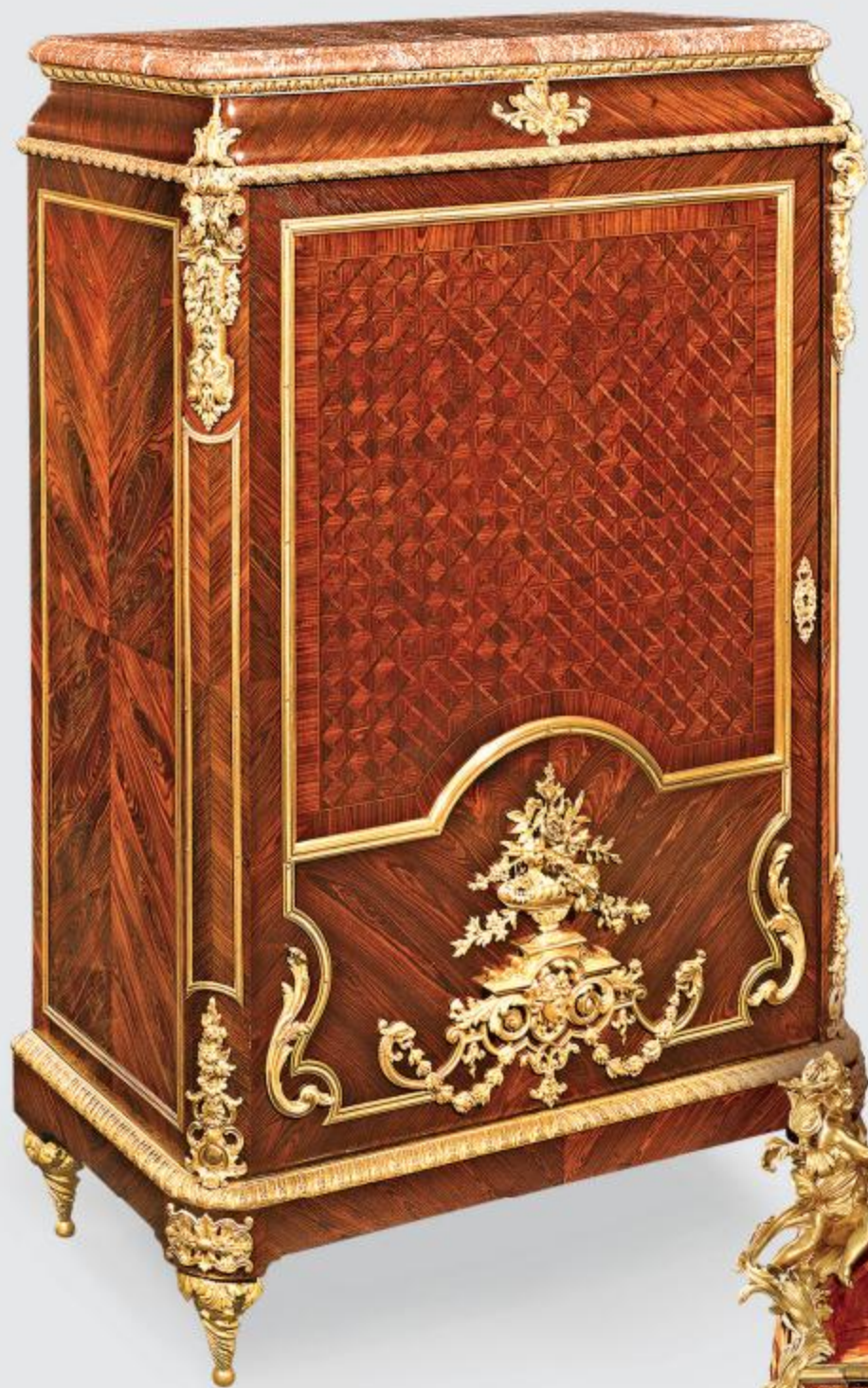
#26-8929     ~~\$34,500~~     **\$20,700**



888-983-7485 • MSRAU.COM • 39







***Meuble de Milieu Cabinet***

Circa 1880

This Louis XIV-style kingwood *meuble de milieu* crafted by Maison Grimard features six compartments used to store linens, such as those for the bedroom or even the dining table.

34<sup>1</sup>/<sub>2</sub>"w x 18<sup>1</sup>/<sub>2</sub>"d x 58<sup>1</sup>/<sub>2</sub>"h

#30-4699    ~~\$88,500~~    **\$70,800**



***Millet's Bureau à Gradin Desk***

Circa 1885

This rare *bureau à gradin*, or tiered desk, was crafted by Theodore Millet of Paris. Decorated on all sides with rosewood trellis marquetry, it also features superbly cast ormolu mounts. Marked "Millet."

44"w x 28"d x 45<sup>3</sup>/<sub>8</sub>"h

#30-4702    ~~\$98,500~~    **\$68,950**





**Sageot Boulle Cabinet**

Circa 1710

This period Louis XIV cabinet was created by the distinguished ébéniste Nicolas Sageot and is one of only a handful known to be marked with his stamp. It features intricate Boulle marquetry of gilded brass and tortoiseshell cut into arabesque and floral motifs. Stamped "Nicolas Sageot."

62"w x 24½"d x 100"h

#29-0963     ~~\$348,500~~ **\$209,100**



888-983-7485 • MSRAU.COM • 41





**Pope Leo XIII Chiavari Chairs**

Circa 1892

These specially designed lemonwood chairs were given to Pope Leo XIII by the Italian City of Chiavari when the city became a diocese in 1892. They are carved with several papal motifs, including the pope's crown.

17<sup>1</sup>/<sub>2</sub>"w x 16"d x 40"h

#30-4008     ~~\$44,500~~ **\$31,150**



**Italian Micromosaic Table**

Circa 1860

The surface of this exceptional Italian Grand Tour table features micromosaic plaques of the utmost intricacy. The top is a virtual tour of Rome's most beloved sites, including Saint Peter's Square at the center.

22<sup>3</sup>/<sub>4</sub>"dia. x 30<sup>1</sup>/<sub>2</sub>"h

#28-8262     ~~\$48,500~~ **\$38,800**







*Cabinet of Curiosities*

Circa 1635

This Italian Baroque-period cabinet of curiosities was once used to hold all manner of rare and unusual objects from around the world. Similar cabinets are found in the Victoria & Albert Museum and the Rijksmuseum.

43<sup>5</sup>/<sub>8</sub>"w x 20<sup>3</sup>/<sub>4</sub>"d x 73<sup>1</sup>/<sub>4</sub>"h

#30-7619    ~~\$398,500~~    **\$259,025**

888-983-7485 • MSRAU.COM • 43





***Russian Cut Glass Chandelier***

Circa 1840

This neoclassical chandelier is covered with intricately cut glass suspended from branches of hand-crafted ormolu. Many such luxurious objects were destroyed by the Communist regime during the 20th century, making this chandelier a rarity.

33"dia. x 41"h

#29-4444    ~~\$98,500~~ **\$59,100**





**Amethyst Triple Candelabra**

Circa 1860

Amethyst is joined by high-caliber ormolu mounts in these exceptional candelabra.

5<sup>3</sup>/<sub>4</sub>" dia. x 10<sup>5</sup>/<sub>8</sub>" h

#29-1728    ~~\$49,500~~    **\$29,700**



**Cut Glass Centerpiece**

Circa 1910

This rare four-light cut glass centerpiece by Apsley Pellatt is topped with a flower vase center enclosing an intricate wheel-cut cameo, or sulphide, of Andromache, the wife of the Trojan Hector.

13" dia. x 15" h

#29-5279    ~~\$16,850~~    **\$9,990**





***Napoleon III Gilt Mirror***

Circa 1870

This impressive Napoleon III-period mirror is adorned by an elaborate giltwood frame that features decorative elements such as garlands, doves, a basket of flowers and Apollo's torch.

78"h x 55 1/4"w

#29-2041    ~~\$38,500~~    **\$23,100**



**Louis XIV-Period Tortoiseshell Mirror**

Circa 1700

This exceptional Louis XIV-period mirror is set in a frame of tortoiseshell, which was one of the most luxurious materials in the world in the 18th century.

43<sup>1</sup>/<sub>4</sub>"h x 33<sup>1</sup>/<sub>4</sub>"w

#29-5314    ~~\$29,850~~ **\$21,540**



**George II Gilt Gesso Mirror**

Circa 1760

This rare George II-period gilt gesso mirror is executed in a grand Palladian style. To find a mirror from the period in such superb condition is a rarity.

52<sup>1</sup>/<sub>2</sub>"h x 26<sup>3</sup>/<sub>4</sub>"w

#29-3009    ~~\$44,850~~ **\$26,910**





**Saint Louis Crystal Nef Centerpiece**

Circa 1887

Crafted by the oldest and most respected crystal manufacturer in Europe, this nef by Saint Louis Crystal was almost certainly exhibited at the 1889 Exposition Universelle in Paris.

23"w x 11"d x 28"h

#30-4852    ~~\$28,500~~    **\$19,990**

**Thomas Webb Claret Jug**

Hallmarked 1885

This carved cameo glass claret jug by Thomas Webb & Sons is crowned by a gilt silver spout and handle by silversmith Frederick Bradford McCrea.

6"w x 5"d x 11"h

#29-8731    ~~\$14,500~~    **\$9,725**







**Cranberry Glass Bowls and Saucers**

Circa 1910

This set of 14 bowls and saucers is crafted of highly desirable cranberry glass, which has been cut-to-clear with an intricate motif of fruits and leaves.

Bowls: 5" dia.

#27-9947    ~~\$4,950~~    **\$2,980**



**Baccarat Glass Centerpieces**

Circa 1890

This rare pair of centerpieces by Baccarat is crafted in a teardrop design that demonstrates the mastery and artistry of this celebrated firm.

12" dia. x 14"h

#30-3319    ~~\$16,850~~    **\$11,795**





*Sèvres Palace Urns*

Circa 1860

These monumental mercury-gilded bronze-mounted Sèvres porcelain urns feature the renowned manufactory's signature deep cobalt blue glaze. Artist signed "A. Nicolas."

23"w x 17"d x 48<sup>1</sup>/<sub>4</sub>"h

#30-1803    ~~\$285,000~~    **\$199,500**



**Wedgwood Fairyland Lustre Plate**

Circa 1923

This enchanting Wedgwood *Fairyland Lustre* plate is decorated in a rare variation of the desirable *Imps on a Bridge and Treehouse* pattern. Marked "Wedgwood/Made in England."

10<sup>5</sup>/<sub>8</sub>" dia.

#29-9284    ~~\$12,850~~ **\$8,995**



YOU CAN BUY WITH CONFIDENCE.  
EVERY PIECE IN OUR COLLECTION  
HAS BEEN THOROUGHLY  
RESEARCHED AND EXPERTLY VETTED  
FOR **QUALITY AND AUTHENTICITY.**



**KPM Papal Tazza**

Circa 1823

This highly important porcelain tazza by KPM was created for Pope Pius VII by the special order of King Friedrich Wilhelm III as a symbol of peace and friendship.

20<sup>1</sup>/<sub>2</sub>" dia. x 13<sup>3</sup>/<sub>4</sub>" h

#30-4105    ~~\$98,500~~ **\$78,800**





**German Mother-of-Pearl and Gold Snuff Box**

Circa 1750

Multi-colored mother of pearl and yellow gold adorn this opulent 18th-century German snuff box.

3 1/8" w x 1 7/8" d x 1 3/4" h

#29-9580     ~~\$68,500~~ **\$47,950**

**English Perfume Bottle**

Circa 1820

Crafted of yellow gold with multi-colored gems, this one-of-a-kind perfume bottle also features a heart-shaped cabochon gemstone hidden in its design.

1 1/2" w x 1" d x 2 3/8" h

#30-1731     ~~\$19,850~~ **\$13,895**



**French Gold Étui**

Hallmarked 1781

This rare Louis XVI-era étui is crafted of green and yellow gold in a neoclassical design. Bears the maker's mark of master goldsmith Jean François Mancel.

5 3/16" length

#30-7599     ~~\$16,850~~ **\$10,953**



*Victorian Nécessaire de Voyage*

Circa 1865

This English vanity case features a velvet-lined interior that houses various toiletry accouterments, including opaline glass containers and an array of manicure tools. The impressive nécessaire even hides a secret drawer that extends from the side.

12" w x 9" d x 6" h

#30-5395    ~~\$19,850~~ **\$12,940**



888-983-7485 • MSRAU.COM • 53





**English Agate and Gold Snuff Box**

Circa 1730

This polished English agate snuff box is mounted in 10K gold that perfectly complements the natural patterns of the stone.

3<sup>3</sup>/<sub>8</sub>"w x 2<sup>1</sup>/<sub>16</sub>"d x 1<sup>5</sup>/<sub>16</sub>"h

#30-7603    ~~\$24,500~~    **\$17,150**

**Georgian Blue John Urn**

18th century

This important George III Blue John urn attributed to the famed architect Sir William Chambers is mounted with elaborate silver ornamentation.

5<sup>1</sup>/<sub>2</sub>"dia. x 12<sup>1</sup>/<sub>2</sub>"h

#30-3850    ~~\$98,500~~    **\$73,260**



**Green Jasper Gold Snuff Box**

Circa 1740

Mounted in 18K yellow gold openwork, this 18th-century English snuff box is formed from green jasper, a type of chalcedony that has been coveted for centuries.

1<sup>5</sup>/<sub>8</sub>"dia. x 1<sup>1</sup>/<sub>16</sub>"h

#30-7604    ~~\$12,850~~    **\$8,995**







***Qing Dynasty Foo Dog Totems***

Circa 1900

Symbolic of the Chinese concept of yin and yang, this pair of polychrome foo dogs, or guardian lions, represent totems of protection and prosperity.

3<sup>3</sup>/<sub>4</sub>"w x 2<sup>1</sup>/<sub>2</sub>"d x 8"h

#29-8637    ~~\$12,850~~    **\$7,710**



***Chinese Ruyi Scepter***

Circa 1800

This ruyi scepter is fashioned from intricately carved tortoiseshell and is a stunning example of Chinese artistry from the Jiaqing period. The scepter held both ceremonial and talismanic significance in Chinese culture.

4"w x 4"d x 17<sup>1</sup>/<sub>2</sub>"h

#30-0302    ~~\$48,850~~    **\$29,890**





**Martha Washington's Hair Comb**

18th century

This historic hair comb was once worn by First Lady Martha Washington as part of a headdress.

7 1/2" w x 5" h

#30-8294    ~~\$18,500~~    **\$11,100**

**George Washington's Hair and Funerary Case Shavings**

Strands of Washington's hair from a piece of mourning jewelry and fragments from the outer red cedar case that housed Washington's casket in 1799 are showcased in this frame.

18" h x 22" w

#30-2077    ~~\$22,850~~    **\$13,710**



**The Washingtons' Dinner Plate**

Circa 1763-83

This Blue Canton china dinner plate was used by George and Martha Washington on the occasions they entertained at home.

9" dia.

#30-8287    ~~\$12,850~~    **\$7,710**





**Mills Double Upright Slot Machine**

Circa 1900

Manufactured during the golden age of the slot machine, this upright machine by Mills features the *Dewey* model alongside its sister machine, the *Chicago*. Together, they were the company's top-of-the-line slot machines.

53<sup>1</sup>/<sub>4</sub>"w x 17<sup>1</sup>/<sub>2</sub>"d x 69"h

#30-7028    ~~\$168,500~~    **\$109,525**

888-983-7485 • MSRAU.COM • 57





***Biedermeier Pharmacy Balance***

Circa 1825

Crafted of walnut with giltwood accents, this extremely rare Bavarian Biedermeier-period pharmacy balance would have graced an apothecary's shop during the early 19th century.

20<sup>1</sup>/<sub>2</sub>"dia. x 30<sup>3</sup>/<sub>4</sub>"h

#30-0199     ~~\$64,500~~     **\$38,700**



***Domestic Medicine Chest***

Circa 1860

An invaluable addition to the 19th-century home, this domestic medicine chest by the firm of Thomas Thompson and S. J. Capper contained everything needed to nurse a member of the household back to health.

15<sup>3</sup>/<sub>4</sub>"w x 12<sup>1</sup>/<sub>4</sub>"d x 8<sup>1</sup>/<sub>4</sub>"h

#30-5401     ~~\$18,500~~     **\$12,025**





**Newton & Son Celestial and Terrestrial Globes**

Dated 1830 and 1857

These exceptionally rare globes by the famed Newton & Son are crafted with a 21-inch diameter, making their surface area 307% larger than the more common 12-inch globe. Depicting the terrestrial and celestial landscapes, the pair represents the impressive scientific advancements of their age.

27"dia. x 46"h

#29-3255    ~~\$295,000~~    **\$177,000**





CURATED SALES EVENT | MUSICAL



**Silver-Gilt Musical Snuff Box**

Circa 1820

This exceptional Swiss silver-gilt musical snuff box crafted by the famed François Nicole contains a complex musical movement that plays two airs with a fine single-piece comb. Comb stamped "F. NICOLE."

3<sup>7</sup>/<sub>16</sub>"w x 2<sup>1</sup>/<sub>8</sub>"d x 1"h

#30-7899    ~~\$22,850~~ **\$17,845**



VIEW OUR ENTIRE SALE  
COLLECTION AT [MSRAU.COM/SALE](http://MSRAU.COM/SALE)  
FEATURING DISCOUNTS FROM  
20%-45% OFF.



**Singing Bird Automaton Music Box**

Circa 1875

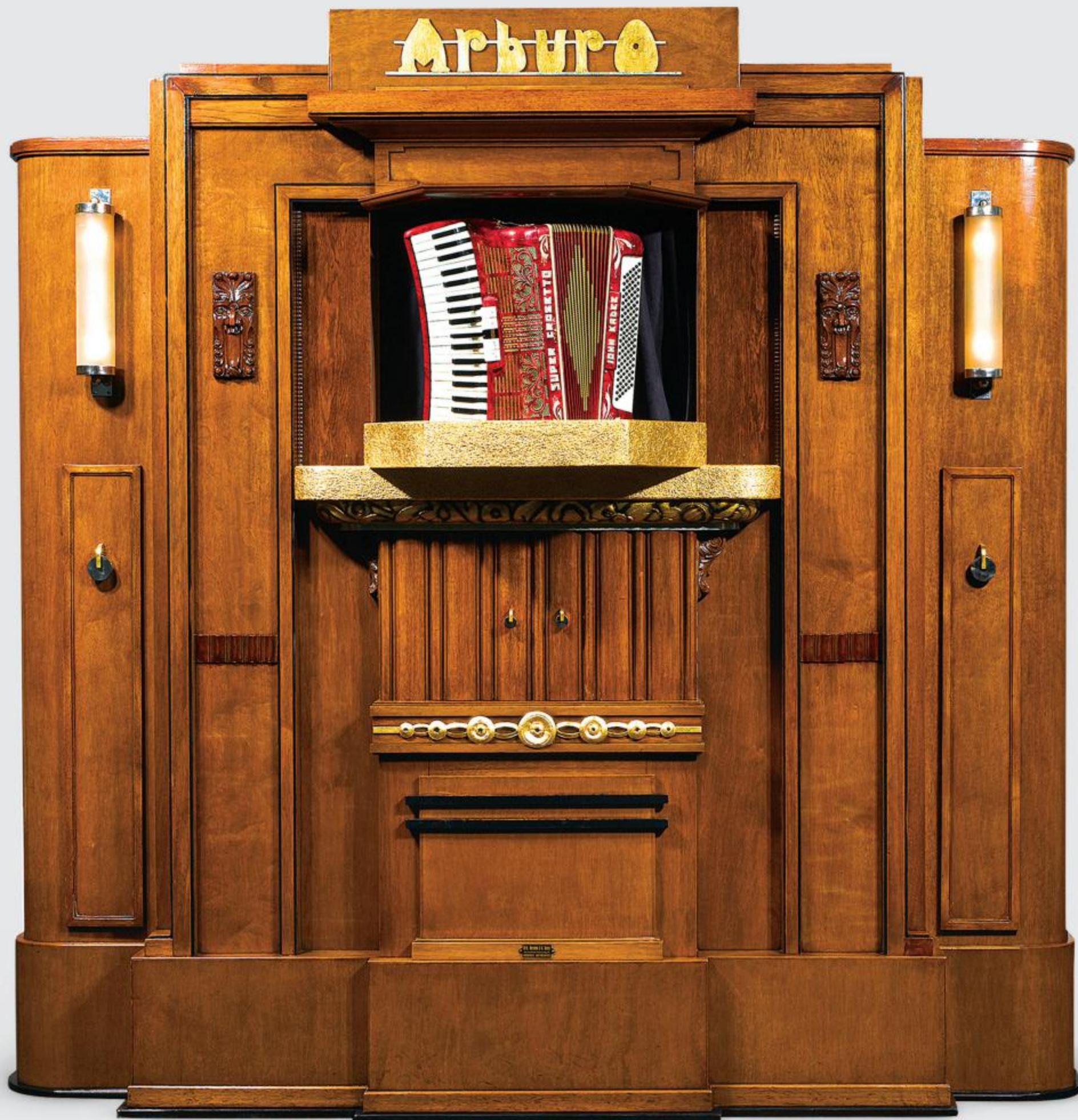
This cylinder music box plays six airs on two combs that produce a cheerful "mandolin" sound, while an animated bird automaton moves its wings and beak to sing along.

30"w x 15"d x 14"h

#29-1321    ~~\$48,500~~ **\$29,100**







*Arburo Orchestrion Organ*

Circa 1928-29

This incredibly rare, early Orchestrion organ is a masterpiece of automated music by the Arburo firm of Arthur Bursens and Gustav Roels. It includes a working accordion, 168-pipe organ, triangle and drums all controlled by one of 20 rolls included with the mechanical marvel.

105 $\frac{1}{2}$ "w x 50 $\frac{1}{4}$ "d x 102 $\frac{1}{2}$ "h

#29-9092     ~~\$168,500~~     **\$101,100**

888-983-7485 • MSRAU.COM • 61





**Tiffany & Co. Chrysanthemum Dinner Plates**

Dated 1902-07

This beautifully crafted set of eight sterling silver dinner plates by Tiffany & Co. features the highly regarded *Chrysanthemum* pattern. Marked "Tiffany & Co."

9<sup>7</sup>/<sub>8</sub>" dia. x 5<sup>5</sup>/<sub>8</sub>" h

#30-8106    ~~\$24,500~~ **\$17,150**

**Tiffany & Co. Chrysanthemum  
Place Card Holders**

Dated 1907-47

These *Chrysanthemum* sterling silver place card holders by Tiffany & Co. are adorned by their namesake flower. Marked "Tiffany & Co."

4<sup>1</sup>/<sub>8</sub>" w x 2<sup>1</sup>/<sub>8</sub>" d x 3<sup>1</sup>/<sub>8</sub>" h

#30-8132    ~~\$3,450~~ **\$2,415**







***Tiffany & Co. Chrysanthemum Flatware Service***

Circa 1910

Masterfully crafted in the distinctive Tiffany & Co. *Chrysanthemum* pattern, this extensive sterling silver flatware service for 18 contains 252 total pieces in its custom-fitted case. Pieces are marked "TIFFANY & CO/STERLING/PAT. 1880 M."

Case: 34 $\frac{1}{2}$ "w x 24 $\frac{1}{2}$ "d x 10"h

#30-7025    ~~\$128,500~~ **\$89,950**

888-983-7485 • MSRAU.COM • 63





***Elkington Silver Gilt Portland Vase***

Hallmarked 1896

This silver gilt Portland vase by Elkington & Co. is based on the antique Roman cameo glass vase in the British Museum.

6" dia. x 9<sup>3</sup>/<sub>4</sub>" h

#29-6403    ~~\$34,500~~    **\$24,150**

***Bateman Silver Gilt Inkstand***

Hallmarked 1832

This grand William IV-period silver gilt inkstand was crafted by William Bateman II, the great-grandson of the famed Hester Bateman.

14<sup>1</sup>/<sub>4</sub>" w x 8<sup>3</sup>/<sub>4</sub>" d x 10" h

#30-7686    ~~\$34,500~~    **\$23,800**





***Elkington Drinks Service***

Circa 1870

This rare and beautifully executed drinks service by Elkington & Co. is a fantastic example of the company's innovative electroplate work. The parcel gilt and silver plated service includes an acid-etched pitcher, six goblets and a serving tray. The tray is closely related to the famed Venus Rosewater Dish presented to the winner of the Wimbledon Women's Tennis Championship. Stamped Elkington & Co.

Tray: 21"dia. | Pitcher: 16"h

#30-0335    ~~\$48,500~~    **\$33,950**





**M.S. Rau**  
FINE ART • ANTIQUES • JEWELS

622 Royal Street • New Orleans, LA 70130  
888-983-7485 • msrau.com

*Curated*  
**SALES EVENT**  
**20% - 45% OFF**



**Singing Bird Box by Charles Bruguier**  
Circa 1860

This extremely rare Swiss fusée singing bird box was crafted by Charles Bruguier. During Bruguier's career, he produced an average of just 27 of these precious boxes per year, of which only a few dozen survive.

4 1/8" w x 3" d x 2" h

#30-6427    ~~\$84,500~~ \$67,600